



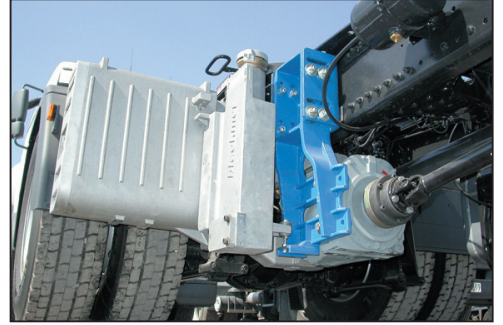
# Modular screw compressor system

Low Space Direct Driven Non Cooled systems



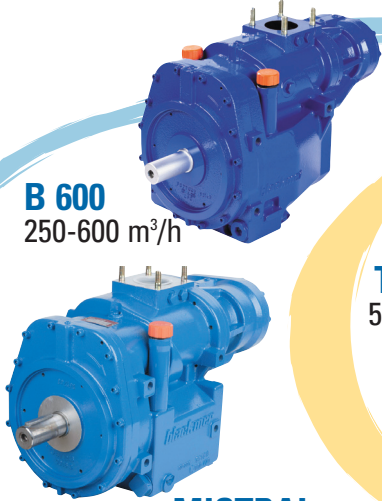
**LS-DDNC**

Direct Driven Non Cooled systems



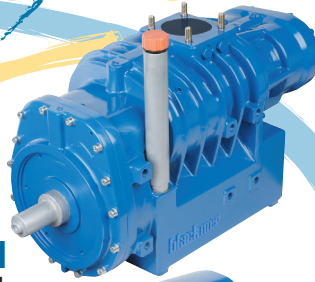
**DDNC**

**B 600**  
250-600 m<sup>3</sup>/h

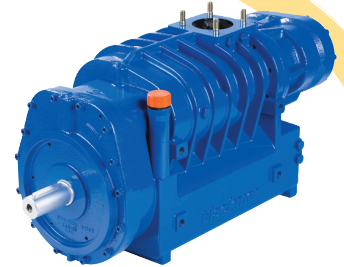
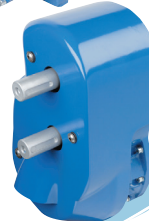


**MISTRAL**  
365-750 m<sup>3</sup>/h

**TYPHON II**  
500-1130 m<sup>3</sup>/h

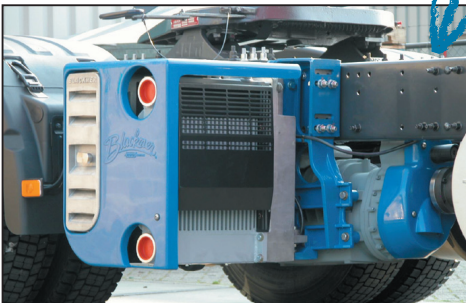


**13R-15L\***  
**19R-22L**  
Multiplier



**B 1500**  
625-1550 m<sup>3</sup>/h  
(\*only in multiplier  
19R-22L)

**DDIC**



Direct Driven Inter Cooled systems

**SP XL-DDIC**

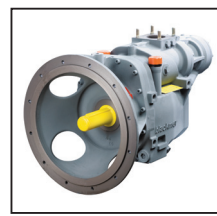


(Suction + Pressure) Direct Driven Inter Cooled systems

Options for every screw compressor



Hydraulic adapter



**DEUTZ**  
Cast iron flange for

**PERKINS**

**YANMAR**



# Modular screw compressor system

Trucks	Gear box	PTO	Rotation	13R	19R	20R
<b>MB</b>	G211(281)-12	NA 123-10b	↻ CCW	1:1.05 / 1.34	1:1.33 / 1.70 1:1.71 / 2.18	1:1.33 / 1.70 1:1.71 / 2.18
	G330-12	NA 123-10b	↻ CCW	1:1.35 / 1.74	1:1.35 / 1.74 1:1.70 / 2.20	1:1.35 / 1.74 1:1.70 / 2.20
	G221-9	NA 123-10b	↻ CCW	1:1.27	1:1.63	1:1.63
	G211-16	NA 123-10b	↻ CCW	1:1.17 / 1.40	1:1.50 / 1.80	1:1.50 / 1.80
	G240-16	NA 123-10b	↻ CCW	1:1.34 / 1.62	1:1.70 / 2.05	1:1.70 / 2.05

Trucks	Gear box	PTO	Rotation	13R	19R	20R
<b>DAF</b>	ZF 16S1620 (1920-2220) TD	N221/10	↻ CCW	1:1.14 / 1.36	1:1.68 / 2.00	1:1.68 / 2.00
<b>IVECO</b>	ZF 16S1820 (2220-2720) TD	N221/10	↻ CCW	1:1.13 / 1.35	1:1.75 / 2.10	1:1.75 / 2.10
<b>MAN</b>	ZF 12 AS 2301 DD	N AS / 10	↻ CCW		1:1.51 1:1.92	1:1.51 1:1.92
<b>RVI</b>	ZF 12 AS 2301 OD	N AS / 10	↻ CCW	1:1.40	1:1.73 1:2.15	1:1.73 1:2.15

Trucks	Gear box	PTO	Rotation	13R	15L	20R
<b>SCANIA</b>	GRS890 / 900 / 920	EG600	↻ CW		1:1.45 / 1.78	
	GRS905	EG660	↻ CCW	1:1.00 / 1.24		
	GRS905	EG661	↻ CCW	1:1.28 / 1.58		1:1.28 / 1.58
	GRS0905	EG663	↻ CCW	1:1.03 / 1.29		
	GRS895	EG664	↻ CCW	1:1.00 / 1.24		
	GRS895	EG665	↻ CCW	1:1.28 / 1.58		1:1.28 / 1.58

Trucks	Gear box	PTO	Rotation	15L	22L	20R
<b>VOLVO</b>	V2214/2514/2814	PTR-FH	↻ CCW			1:1.23 / 1.54
	V2214/2514/2814	PTRD-F(D1-D2)	↻ CW	1:1.30 / 1.62		
	VO2512/3112AT	PTR-FH	↻ CCW			1:1.57 / 2.00
	VO2512/3112AT	PTRD-F(D1-D2)	↻ CW		1:1.65 / 2.10	

**WARNING :** Please take care of the power consumption of the compressor with the safety valve setting is lower than the power of the PTO



Mouvex reserves the right to modify the information and illustrations contained in this document without prior notice. This is a non-contractual document.  
Printed in FRANCE by Filigrane  
© 2009 Mouvex

ZI la Plaine des Isles  
rue des Caillottes  
89000 AUXERRE - FRANCE  
T + 33.3.86.49.86.30  
F + 33.3.86.46.42.10  
contact@mouvex.com



Distributed by :