

## The Mouvex Food Transport solution

# BLK 4-T Positive Displacement Lobe Pump



The new BLK 4-T lobe Pump takes over from the tireless CCL 50i.

More compact it will be your best ally to satisfy the ever-increasing transport requirements.

### Reliable:

- The same key components of the former CCL50i are used in the BLK4T, the parts that created the like exclusive reputation. Shaft seal made of PTFE.
- Easy to clean in all circumstances, it is also easy to take apart in few seconds with usual tools and the lobe extractor supplied with each pump.
- The robust front cover seal remains in place, in the pump casing.

### Adaptable:

- Compact, easy to fit in narrow areas.
- Hollow shaft for hydraulic drive systems or standard shaft for electrical drive.
- Optional: heating jacket, on the front cover.
- Optional: internal relief valve.
- Reversible.

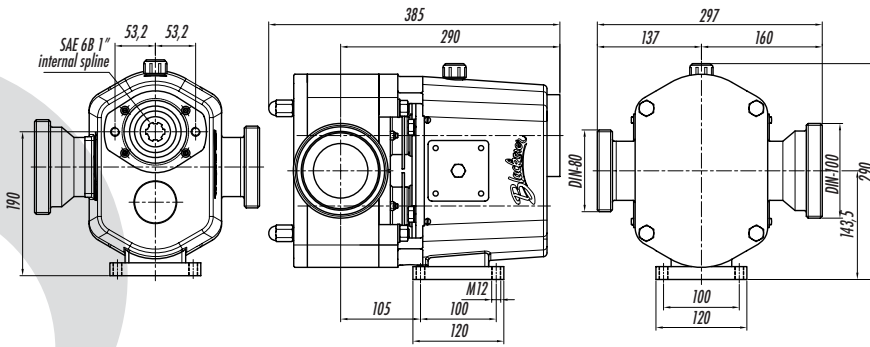
### Clean:

- High grade polished surface.
- Food grade lubricant in the gear box.

**Up to 42 m<sup>3</sup>/h - 7 bar**



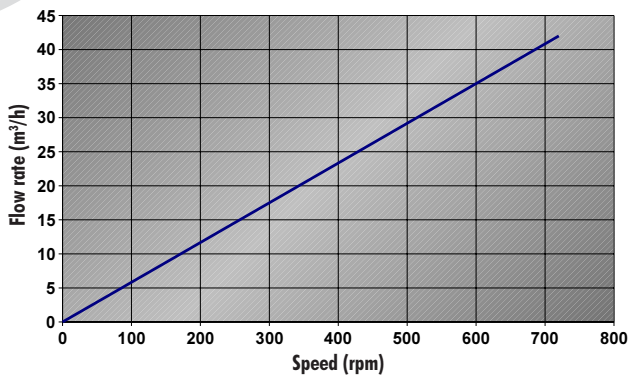
## ◆ Dimensions



## ◆ Operating limits:

Flow rate	42 m <sup>3</sup> /h
Speed	720 rpm
Pressure	7 bar
Temperature	120°C

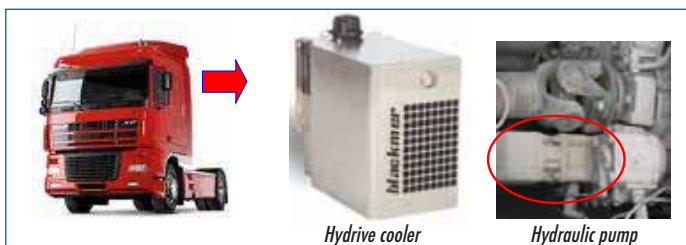
## ◆ Flow rate graph (viscosity of 500 cst):



<b>Materials</b>	Wet parts made of 316L stainless steel.	
	EPDM O rings, FDA type	
	Shaft seal PTFE	
<b>Equipment</b>	Shaft seal with 3 lip seals	
	Standard connections DIN 80 and DIN 100	
	Rotor: Tri lobe	
	Shaft 1	hollow SAE 6B Ø 1"
	Shaft 2	male output Ø 38
	Heating jacket as an option	
Internal relief valve as an option		
<b>Direction of rotation</b>	Reversible	
<b>Mounting</b>	Horizontal or vertical	
<b>Standard</b>	3A - compliant	
<b>Weight</b>	65 Kg	

## ◆ Packages available

### ◆ Hydraulic drive:



### ◆ Electrical drive:



ZI la Plaine des Isles  
rue des Caillottes  
89000 AUXERRE - FRANCE  
T + 33.3.86.49.86.30  
F + 33.3.86.46.42.10  
contact@mouvex.com

www.mouvex.com



Distributed by: