



AM NOYEE Training

A piece of history

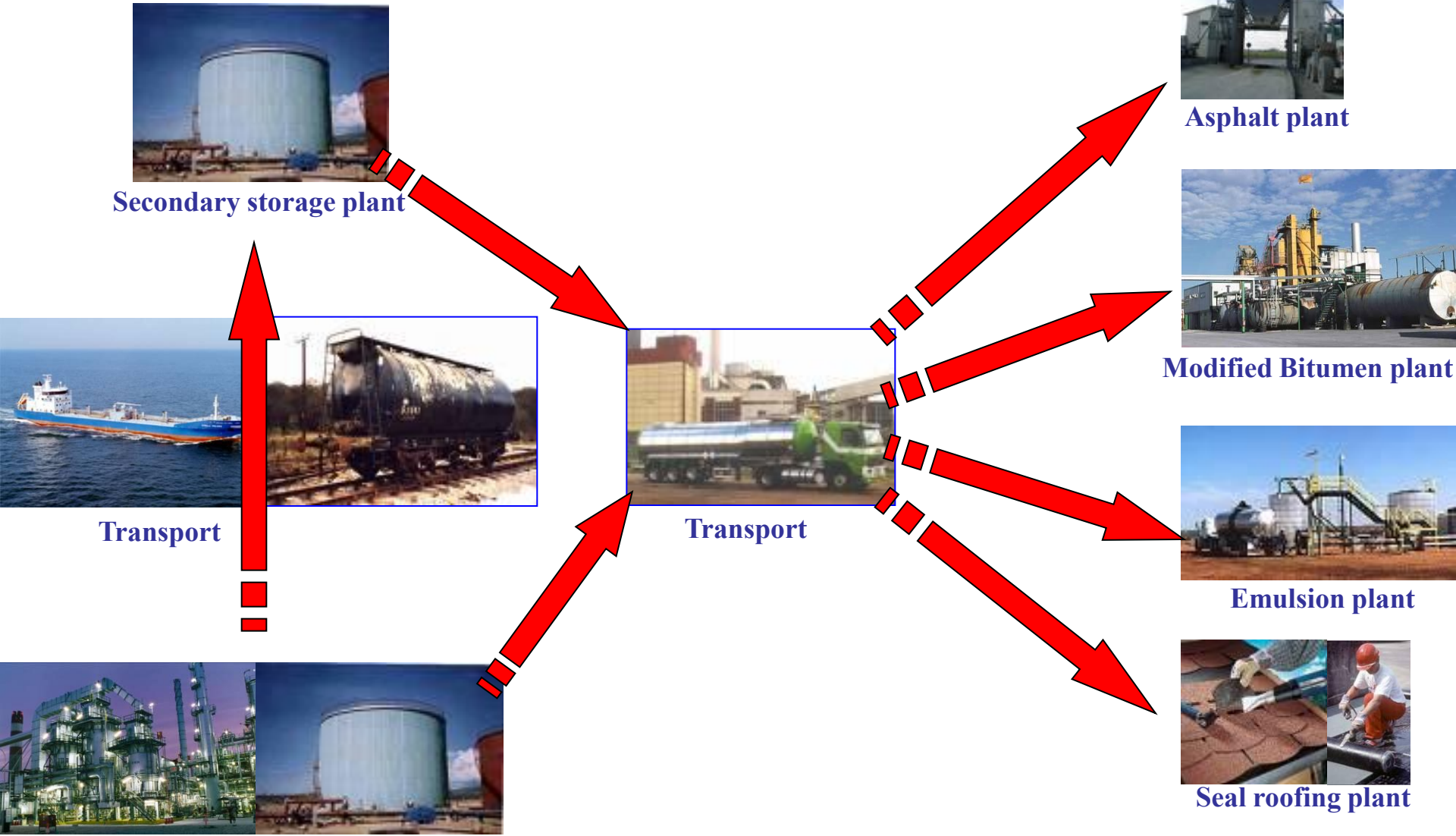
- 
- ❑ The first model has been manufactured in 1972
 - ❑ Since then, about 2500 of this pump were produced
 - ❑ Never returns to after sales, thanks to high proven reliability
 - ❑ Sometimes inspired some of our competitors but characteristics of AM Noyee have never been equalized

What is it used for?

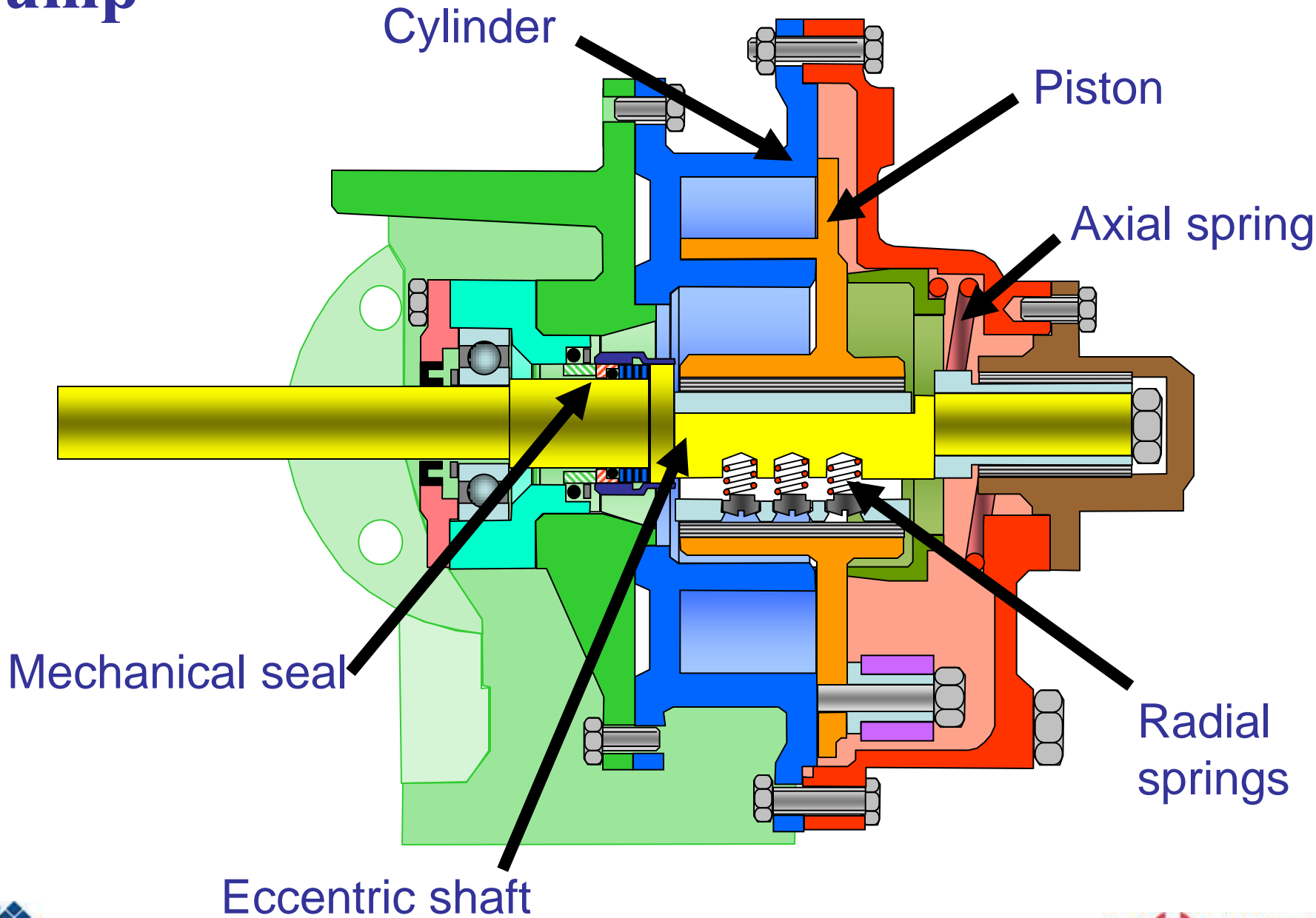


✓ Fitted on Bitumen semi trailers

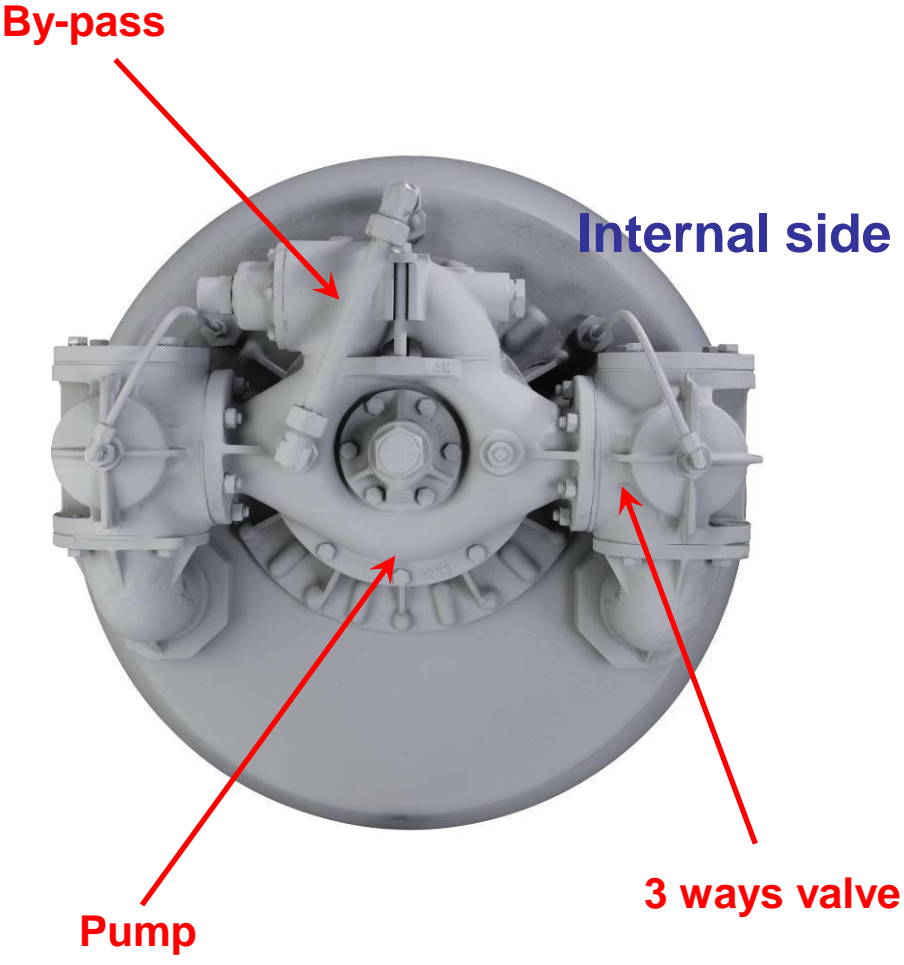
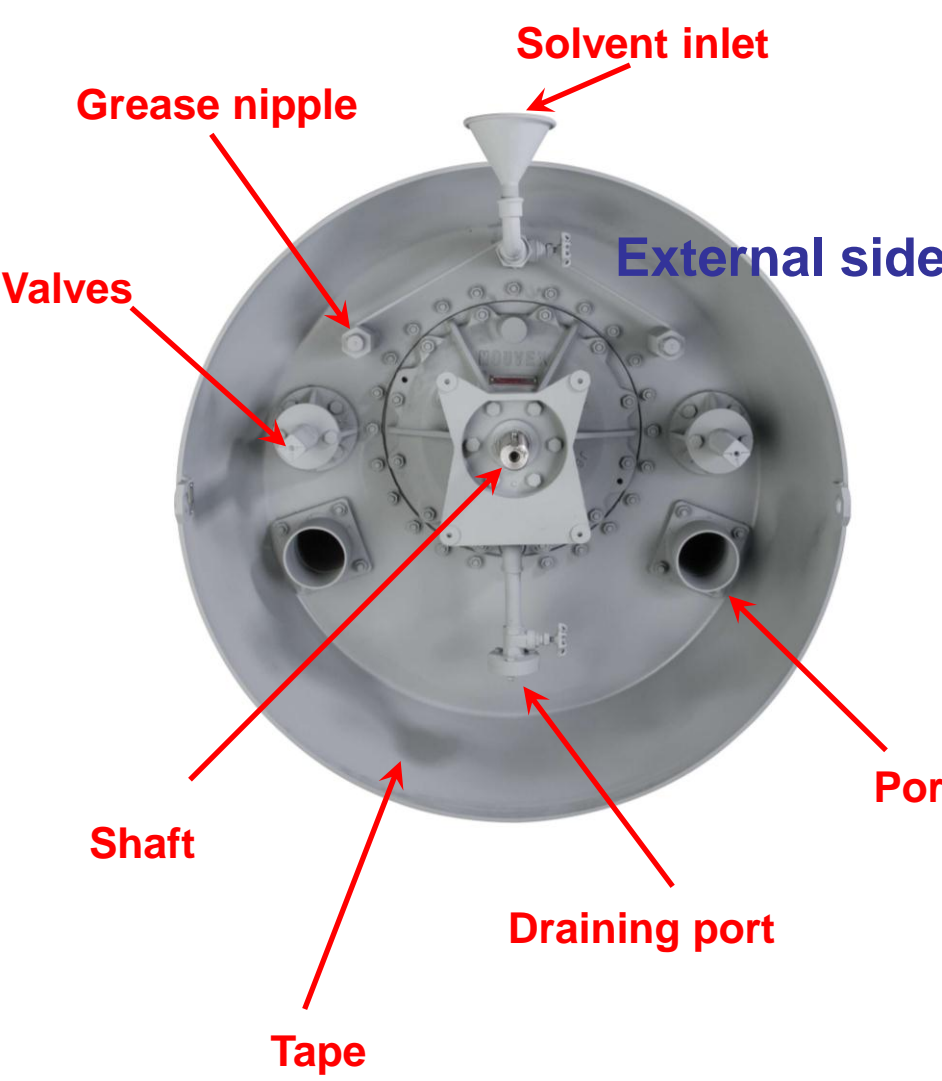
Bitumen detailed process



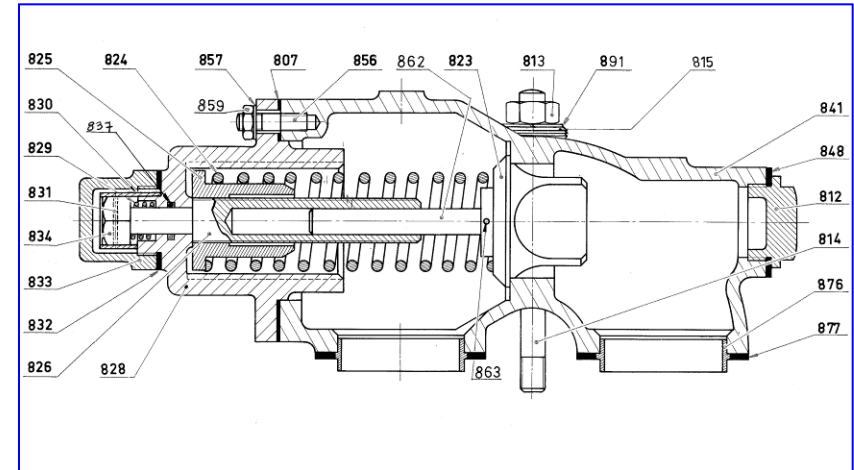
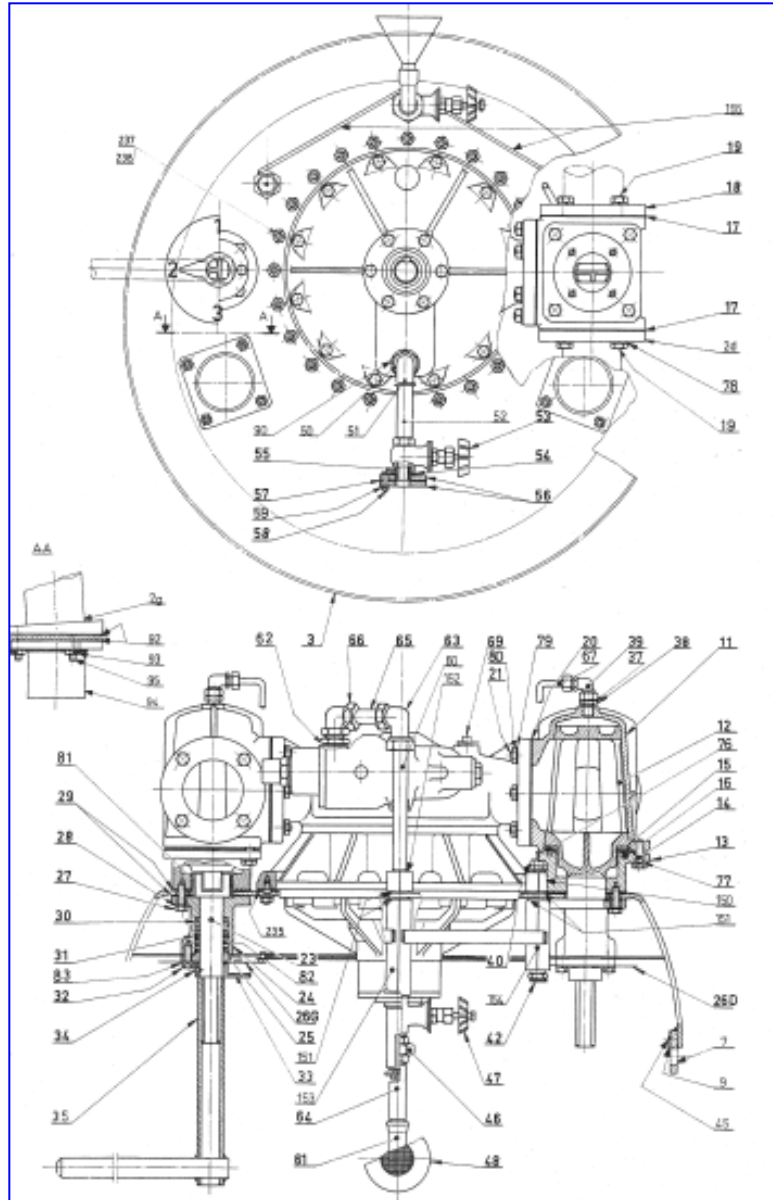
Pump



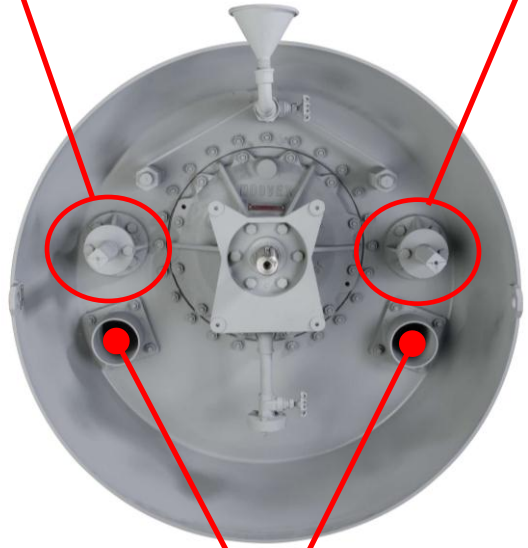
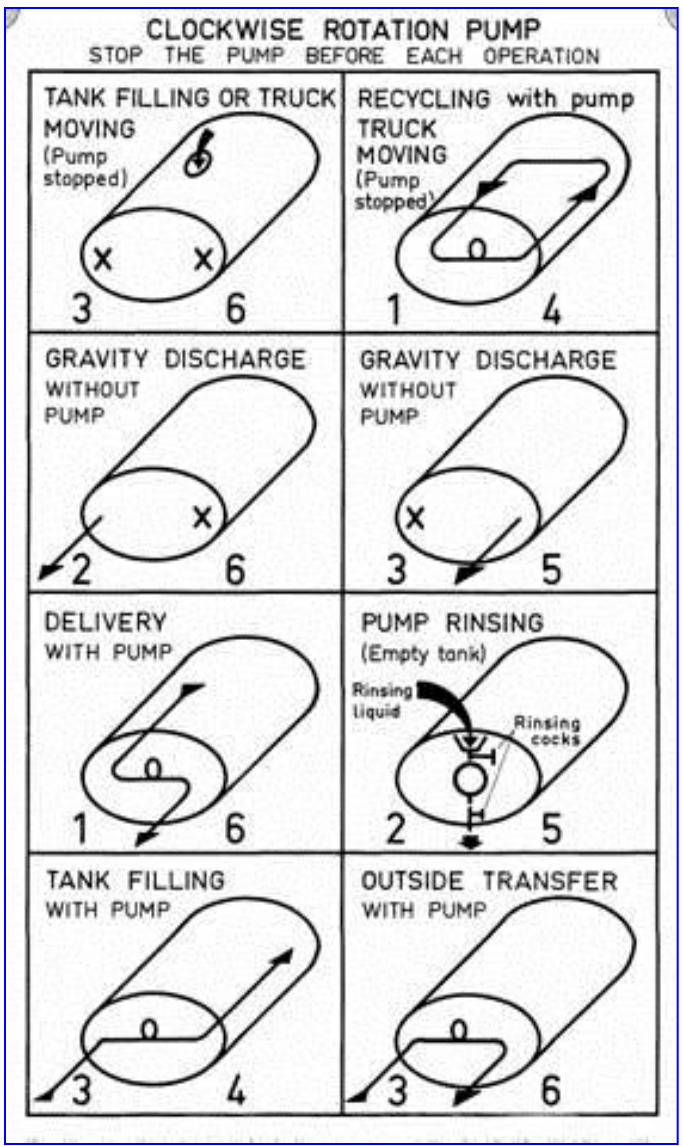
Components



Conception

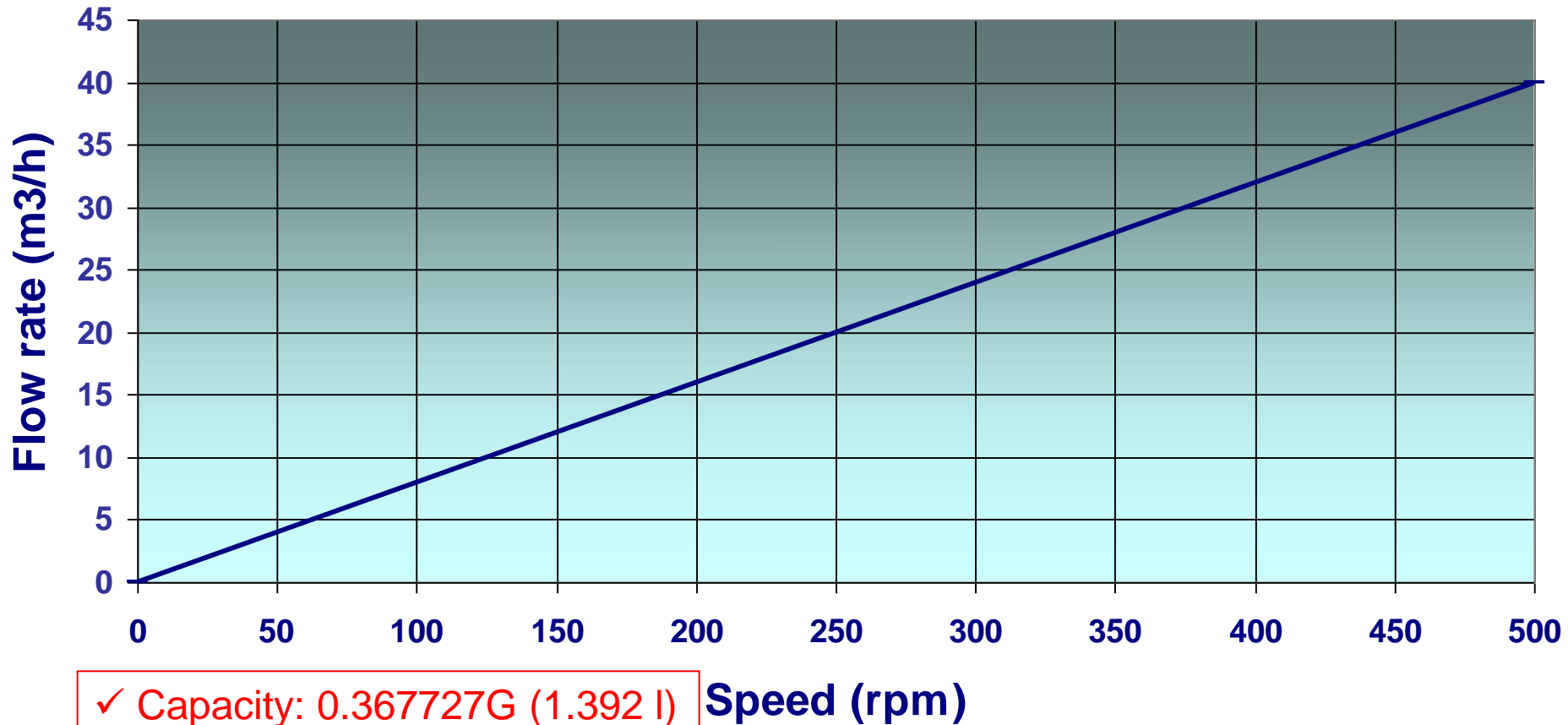


Multipurpose pump



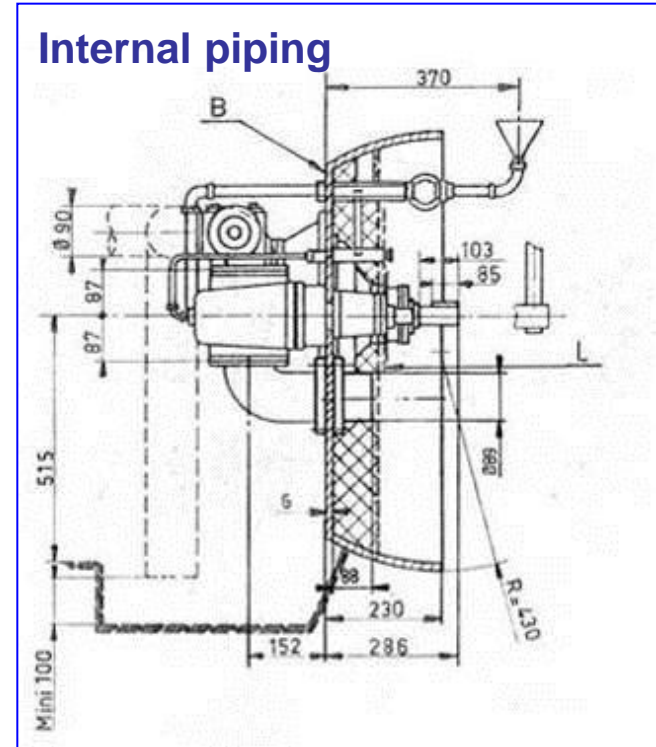
Ports

Performances

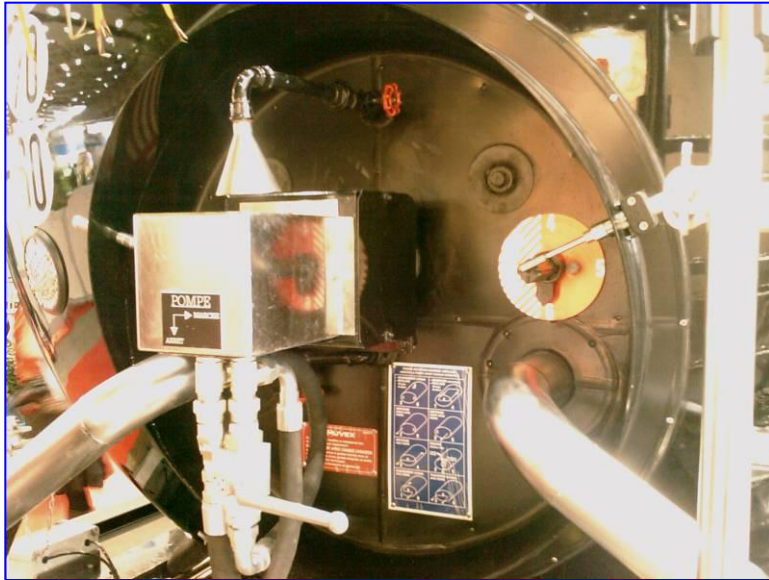


- ✓ Capacity: 0.367727G (1.392 l)
- ✓ Pressure: 51 PSI (3.5 bar)
- ✓ Temperature: 392°F (200°C)
- ✓ Power: 10HP (7.5 KW)

Installation



Driving



Hydraulic motor



Diesel engine

Majors benefits

Our goal : make your life easy.

➤ **Compact**, all components are mounted on the plate

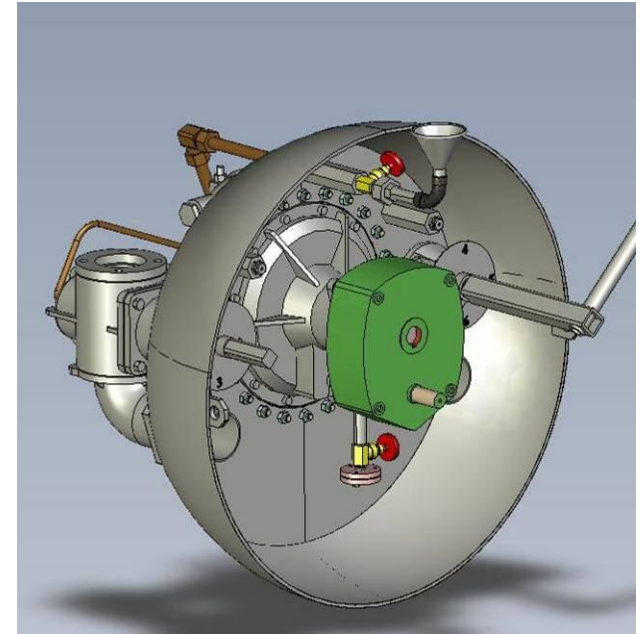
➤ **Warmed**, submerged, it is always at the good temperature

➤ **Versatile**, the 3 way valves enable all needed operations with the pump

➤ **Always ready to go**, thanks to the greasing system and valves ensuring there is no setting of bitumen

➤ **Always clean**, thanks to the rinsing circuit which will easily clean the inside of the pump

➤ **No special maintenance**



Some references

Constructeurs

- ❑ ACMAR
- ❑ BIFECTA
- ❑ LAFON
- ❑ MAGYAR
- ❑ MAISONNEUVE
- ❑ PARCISA
- ❑ SACIM
- ❑ TITAN
- ❑ TRAILOR
- ❑ VANHOOL
- ❑ LAG



Transporteurs

- ❑ CHARLES ANDRE
- ❑ CITAIX
- ❑ EB TRANS
- ❑ MGE
- ❑ NAFTAL
- ❑ SAMAT
- ❑

What about competition?

Only with basic simple technology of gear pumps,

- Performances reducing and loss of efficiency in the time
- Self priming capacity is limited
- Can not empty the pipes at the end of transfer
- Not recommended to run the pump dry
- Leaks, due to use of old system with packing gland
- Life time is reduced, due to higher speed over 1500 rpm and no compensation of wear of the gears
- Can not accept particles
- Gear technology brakes the product structure

